



## Technical specifications and instructions



**7 Frame  
Plunger pump**

**Standard model  
56.B01**

**Gearbox model  
56.G1**

### Specifications (\*)

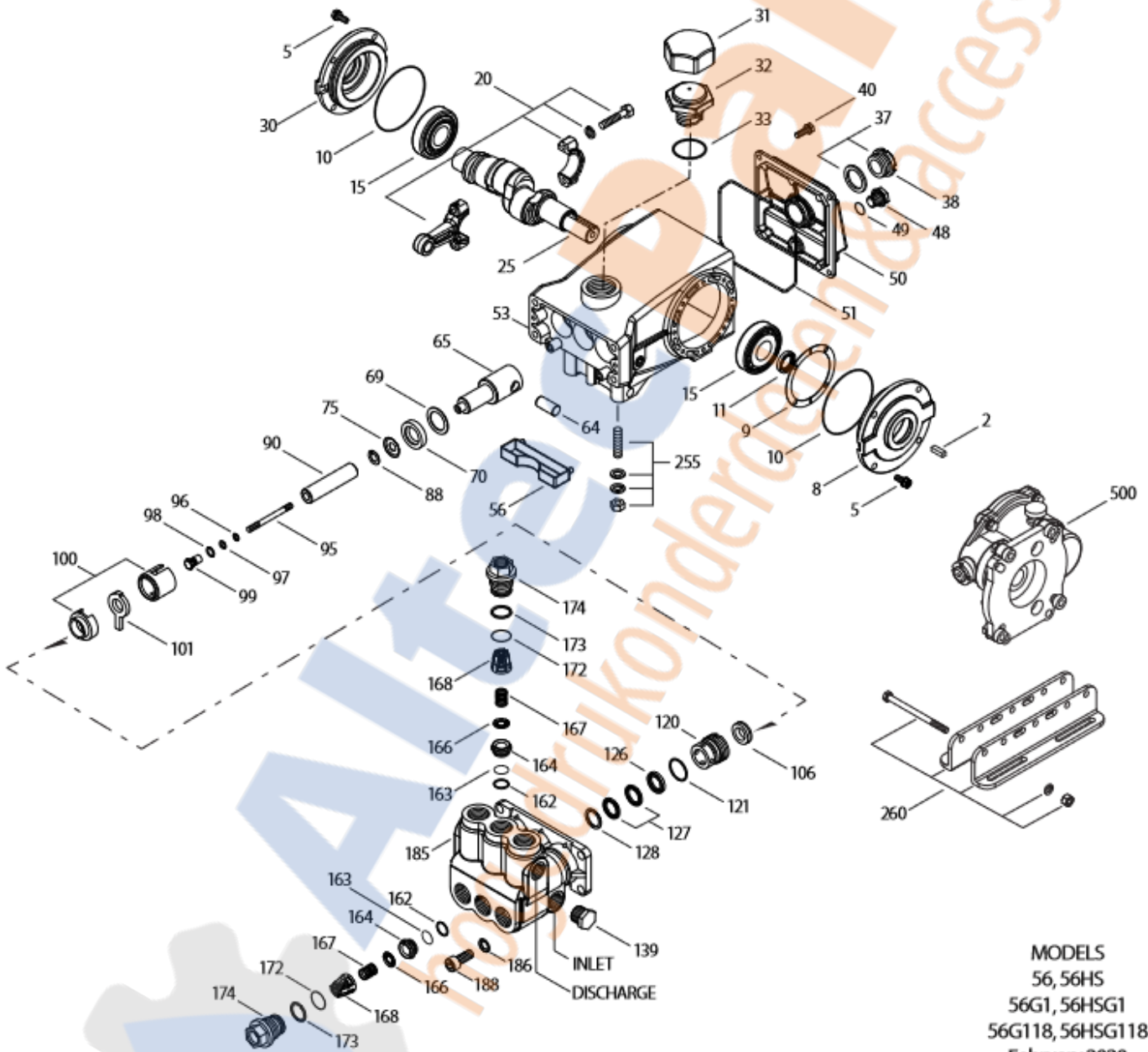
	<b>Model 56.B01</b>	<b>Model 56.G1</b>
<b>Flow</b>	25 l/min	30 l/min
<b>Pressure range</b>	7 to 190 bar	7 to 175 bar
<b>RPM pump</b>	1450 RPM	1760 RPM
<b>RPM engine</b>	-	3600 RPM
<b>Stroke</b>	24 mm	24 mm

### Common specifications

<b>Bore</b>	18 mm
<b>Inlet pressure range</b>	flooded to 4.1 bar
<b>Crankcase capacity</b>	0,74 l
<b>Maximum liquid temperature</b>	71° C
<b>Inlet ports (2)</b>	1/2" NPTF
<b>Discharge ports (2)</b>	3/8" NPTF
<b>Shaft diameter</b>	24 mm
<b>Weight</b>	13,3 kg
<b>Weight w/gearbox</b>	16,7 kg
<b>Dimensions (pump only)</b>	354 x 208 x 163 mm
<b>Dimensions (w/gearbox)</b>	354 x 275 x 163 mm

(\*) Abnormalities permitted only after consultation and written confirmation from Cat Pumps.

# Exploded View



# Parts list

Item	Num.	Mat.	Description	Qty
	<b>56.B01</b>			
	<b>56.G1</b>			
2	30067	STL	Key (M8x7,5x25)	1
5	125824	STCP R	Screw, HHC, sems (M6x16)	8
8	133571	ALE	Cover, bearing (see TB 118,123)	1
9	815280	FBR	Shim, split, 2-pc	1
10	12393	NBR	O-ring, bearing cover	2
11	43222	NBR	Seal, oil crankshaft	1
15	43221	STL	Bearing, roller	2
20	48863	TNM	Rod, connecting {06/02}	3
25	43464	FCM	Crankshaft, single end	1
30	133572	ALE	Cover, bearing blind (see TB 118,123)	1
31	828710	PE	Protector, oil cap w/foam gasket	1
32	44666	RTP	Cap, oil filler, domed-gearbox models	1
33	14177	NBR	O-ring, oil filler cap – 70D	1
37	92241	PC	Gauge, oil, bubble w/gasket – 80D	1
38	44428	NBR	Gasket, flat flex, oil gauge – 80D	1
40	126541	STCP R	Screw, HHC sems (M6x20)	4
48	25625	STCP	Plug, drain (1/4" x 19 BSP)	1
49	23170	NBR	O-ring, drain plug – 70D	1
50	133569	ALE	Cover, rear (see TB 118,123)	1
51	14047	NBR	O-ring, rear cover (see TB 106)	1
53	133593	ALE	Crankcase (see TB 118,123)	1
56	43240	POP	Pan, oil	1
64	43237	CM	Pin, crosshead	3
65	48913	SHS	Rod, plunger, short {05/02}	3
69	126589	STCP R	Washer, oil seal	3
70	43228	NBR	Seal, oil, crankcase	3
75	43328	S	Slinger, barrier	3
88	45697	S	Washer, keyhole (M18xM10)	3
90	43232	CC	Plunger (M18x77)	3
95	126559	STCP R	Stud, plunger retainer (M6x70)	3
96	43235	PTFE	Back-up-ring, plunger retainer	3
97	17399	NBR	O-ring, plunger retainer – 80D	3
	14160	FPM	O-ring, plunger retainer – 80D	3
98	45891	CU	Gasket, plunger retainer	3
99	46504	S	Retainer, plunger (M6)	3
100	45689	PVDF	Retainer, seal, 2pc (see TB 105)	3
101	43239	FBR	Wick, long tab	3
106	43243	NBR	Seal, LPS w/S-Spg	3
	44926	FPM	Seal, LPS w/SS-Spg	3
	76243	ST2	Seal, LPS w/S-Spg	3
120	45685	BB	Case, seal	3
121	20285	NBR	O-ring, seal case – 70D	3
	11693	FPM	O-ring, seal case	3
126	44550	BB	Adapter, female	3
127	44549	SNG	V-packing	6
	45617	SFG	V-packing	6
	48300	STG	V-packing	6
128	45618	BB	Adapter, male	3
139	43448	BB	Plug, inlet (1/2" NPTM)	1
162	43248	PTFE	Back-up-ring, seat	6
163	43249	NBR	O-ring, seat – 80D	6
	44383	FPM	O-ring, seat – 70D	6

164	43722	S	Seat	6
166	43721	S	Valve	6
167	43751	S	Spring	6
168	44564	PVDF	Retainer, spring	6
172	14179	NBR	O-ring, valve plug – 70D	6
	15855	FPM	O-ring, valve plug – 70D	6
173	20213	PTFE	Back-up-ring, valve plug	6
174	45939	BB	Plug, valve, extended	6
185	45937	FBB	Head, manifold (M10)	1
186	49680	S	Washer, spring (M10)	4
188	49679	S	Screw, HSH (M10x35)	4
255	30243	STZP	Kit, direct mount	1
260	30611	STZP R	Assy, angle rail B (2.09" x 9.45")	1
	30645	STZP R	Assy, angle rail A (2.95" x 11.81")	1
299	814618	FBB	Head, complete w/NBR seals and O-rings	1
300	30799	NBR	Kit, seal (incl. 97,101,106,121,127) <b>standard</b>	1
	34237	FPM	Kit, seal (incl. 97,101,106,121,127)	1
	76799	HT	Kit, seal 'High-Temp' (incl. 97,101,106,121,127)	1
	76826	STHT	Kit, seal (incl. 97,101,106,121,127)	1
310	33820	NBR	Kit valve (incl.162-168,172,173) <b>standard</b>	2
	34238	FPM	Kit valve (incl.162-168,172,173)	2
500	8071	-	Gearbox 1" shaft (see individual datasheet)	1

**Bold print part numbers are unique to a particular pump model. Italics are optional items.**

{ } Date of latest production change. R Components comply with RoHS Directive. For additional technical information see [www.catpumps.com/literature/tech-bulletins](http://www.catpumps.com/literature/tech-bulletins).

Material codes: (not part or part number)

ALE	Aluminum Epoxy	FPM	Fluorocarbon	S	304SS
BB	Brass	HT	High temperature	SFG	Special blend FPM
CC	Ceramic	NBR	Medium nitrile (Buna-N)	SHS	304 SS/ high strength
CM	Chrome-moly	PC	Poly carbonate	SNG	Special blend (Buna)
CU	Copper	PE	Polyethylene	STCP	Steel/chrome plated
F	Cast iron	POP	Polypropylene	STG	Special blend PTFE white
FBB	Forged brass	PTFE	Pure polytetrafluorethylene	STHT	Special PTFE High Temp
FBR	Fiber	PVDF	Polyvinylidene fluoride	STL	Steel
FCM	Forged chrome-moly	RTP	Reinforced composite	STZP	Steel/zinc plated
				TNM	Special high strength